

Marine Renewable Energy Space-Use Conflicts?

Carrie Pomeroy, PhD

California Sea Grant & UC Santa Cruz

CMANC Fall Meeting

Monterey, CA

November 7, 2013



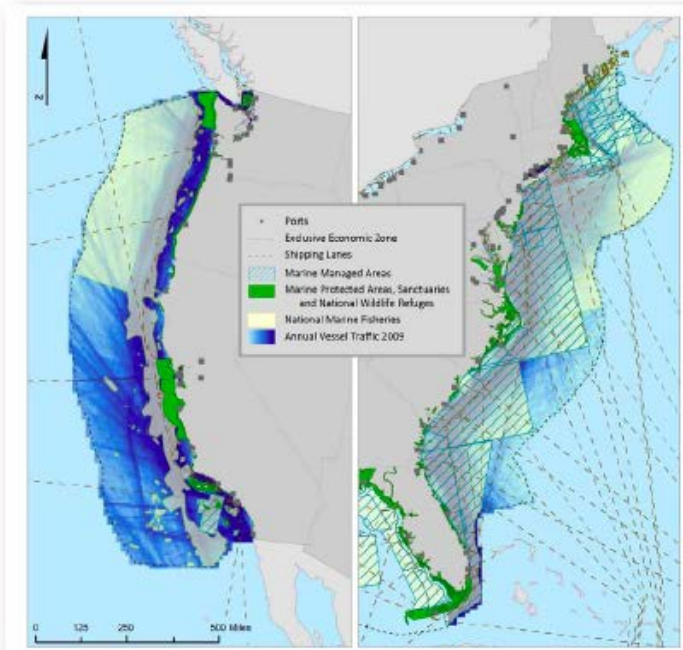
Road Map

- Study overview
- Selected results
- Considerations for MRE
 - and for coastal and marine spatial planning?

Study Overview

OCS Study
BOEM 2012-083

Identification of Outer Continental Shelf Renewable Energy Space-Use Conflicts and Analysis of Potential Mitigation Measures



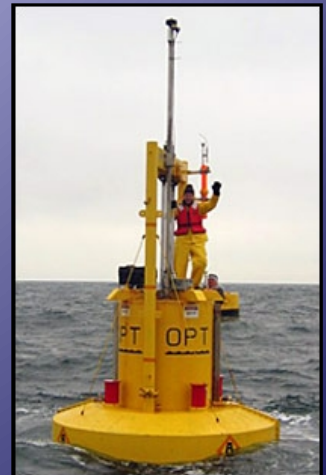
U.S. Department of the Interior
Bureau of Ocean Energy Management

Project Objectives

- Identify and characterize potential space-use conflicts related to OCS MRE activities on the US East and West Coasts
- Describe strategies for avoiding or mitigating conflicts, and mechanisms for improving communication and cooperation among 'stakeholders'

Project Elements

1. Literature review and annotated bibliography
2. Development of a geospatial database
3. **Context-gathering via stakeholder engagement**
4. Report with recommendations



Project Focus

User groups engaged

- Non-commercial
 - Recreational fishing, recreational boating, and research
- Commercial fishing
 - Fishermen, processors, mariculturists
- Commercial non-fishing
 - Shippers, towboat operators, public safety operations

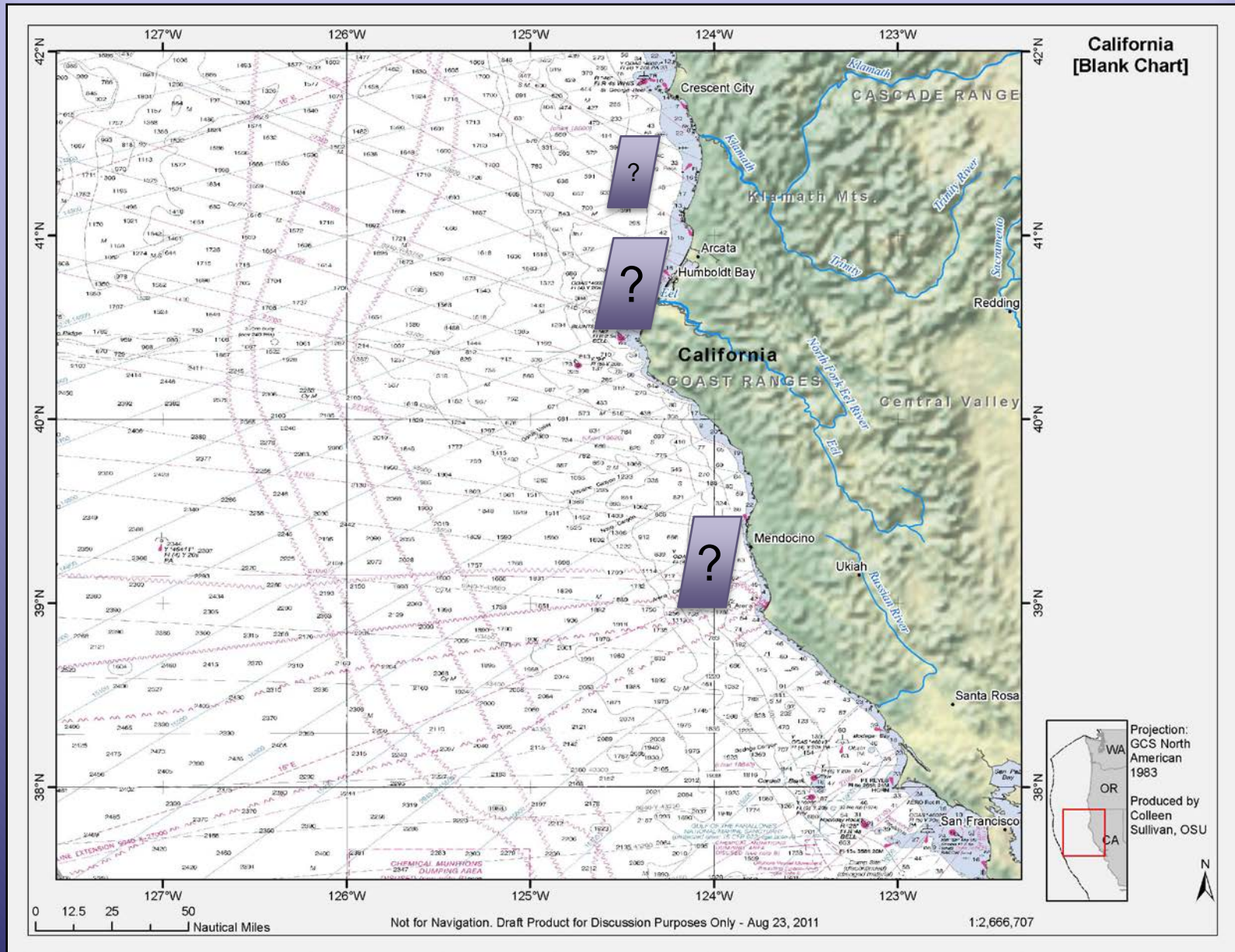
Topics explored

- Space-use characteristics
- Compatible and conflicting use
- Economic/social/cultural impacts
- Perspectives on and strategies for mitigation
- Preferences for communication, information-gathering and user engagement

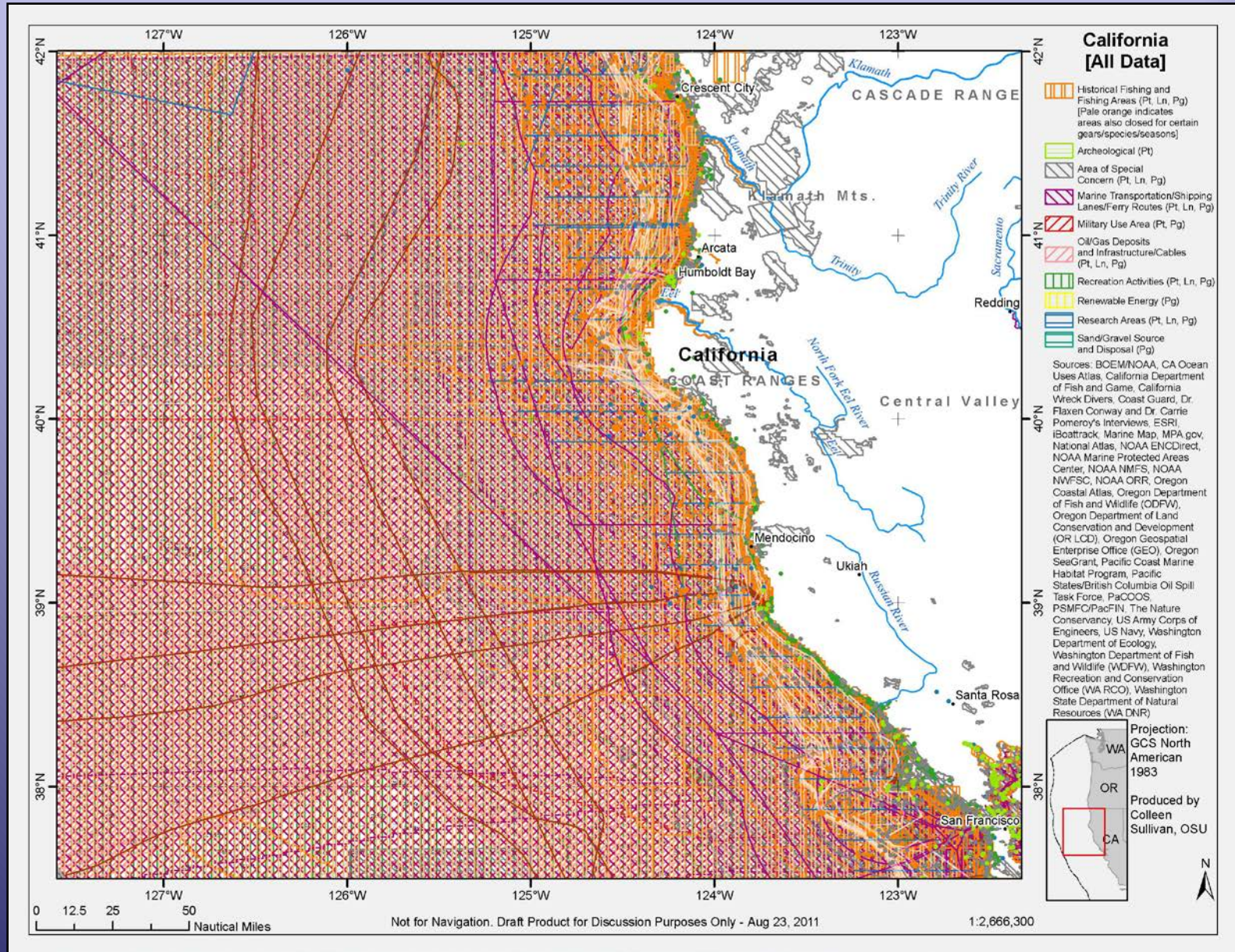
In other words...

- Characteristics of marine and coastal space that current users value
- How these characteristics would affect and be affected by MRE
- How current users negotiate ocean space use
- Ideas about appropriate mitigation for MRE conflict
- Preferences for communication and engagement for MRE - and broader ocean - management

Room for MRE?



It's a Busy Ocean!



Space-Use Characteristics and Values

- Ocean space use is multifaceted, complex, dynamic – at sea and on shore
- Diverse environmental, socioeconomic and regulatory factors affect use
- Diverse non-economic values (also) matter
 - Flexibility
 - Access to diverse places
 - Social and economic interdependence
 - Livelihood, well-being and social identity
 - Local knowledge and perspective

Space-Use Conflict and Coordination

- With multiple uses, there are compatibilities, incompatibilities, and conflicts
 - Formal and informal strategies for avoiding or resolving conflict
 - Diverse values can nonetheless be hard to reconcile
 - “It’s a dance”



Potential Space-Use Conflict Related to MRE

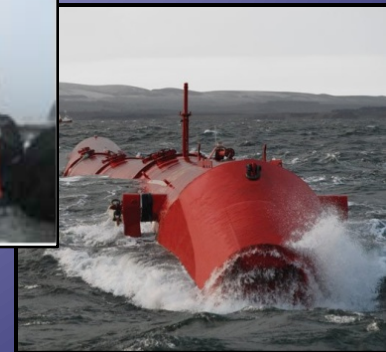
Different needs, different perspectives

Fishing

- Dynamic
- Nuanced
- Short-term claims on space
- Access is key
 - Common property/
common pool
 - Flexibility

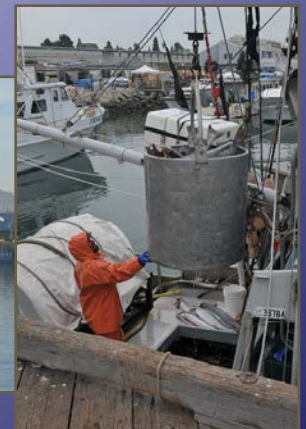
MRE

- Static
- Straightforward
- Long-term claims on space
- Exclusionary



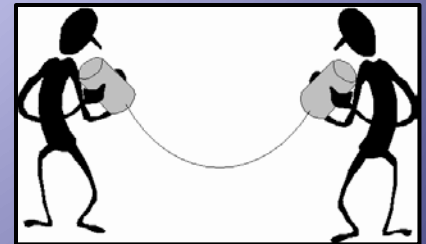
Mitigation

- “Pay to get out of the way” often is impractical and/or undesired
- Avoidance of conflict is highly valued
- Different opinions and ideas
 - Pay most affected individuals directly
 - Don’t pay them directly; create community funds
 - Invest in projects that support existing uses
 - Ease other restrictions on use (e.g., MPAs)



Communication and process

- Most people want to be engaged early and often
 - to protect their values and interests
 - to share knowledge
- Message from the community
 - Involve us from the get-go
 - Use our knowledge; work with us
 - Don't waste our time if you're not going to use the information (you collect and we provide)
 - Don't lie to us



Process

- Diverse processes
 - may require different kinds of information, *but*
 - have cumulative effects on people and communities
- Cumulative knowledge & experience
 - community members
 - researchers
 - managers
- Two analogies
 - moving into a neighborhood
 - a choreographed dance



BOEM Project Recommendations

- Establish a system of early and meaningful communications among affected parties
- Recognize the limitations of maps as conflict management tools
- Promote the development and dissemination of accurate information
- Recognize, respect and work with
 - cultural, social and geographic differences
 - local values and institutions
 - diverse types of knowledge





Thank you!

cpomeroy@ucsd.edu
831-459-4173

Acknowledgements

- Project cooperators: Flaxen Conway, Madeleine Hall-Arber, Michael Harte, Daniel Hudgens, Thomas Murray, Colleen Sullivan, John Weiss, Jack Wiggin, Dawn Wright
- Research participants and others who supported this work
- Funding: US Bureau of Ocean Energy Management (BOEM), Contract M09PC00037



Process

- Who decides
 - Feds
 - States
- How
 - Command and control
 - Bottom up
- On what basis
 - Narrow economic valuation of existing uses
 - Scope of expected benefit
 - Local ----- national
- How conflict is avoided or mitigated
 - Boundaries, buffers and compensation

