

SOMETIMES THERE JUST AREN'T ENOUGH ROCKS...

CMANC
12 NOVEMBER 2020

Chuck Mesa
USACE – Los Angeles District
Chief, Coastal Engineering



US Army Corps
of Engineers®



COASTAL NAVIGATION STRUCTURE ASSET MANAGEMENT



istrict View

QC All Projects Add New Project Add New Structure Export To Excel

	Division	District	Project Name	Structure Name	Structure Type	Previous Rating Date	Previous Structural...	Structural Condition	Structural Remarks	Previous Functional...	Functional Condition
	SPD	Los Angeles	Channel Islands Harbor	Channel Islands Harbor North Jetty, California	Jetty	2017-10-13	B	B	Structural Remarks	A	A
	SPD	Los Angeles	Channel Islands Harbor	Channel Islands Harbor Offshore Breakwater, California	Breakwater	2017-10-13	D	D	Structural Remarks	A	A
	SPD	Los Angeles	Channel Islands Harbor	Channel Islands Harbor South Jetty, California	Jetty	2017-10-13	D	D	Structural Remarks	B	B
	SPD	Los Angeles	Dana Point Harbor	Dana Point Harbor East Breakwater, California	Breakwater	2017-10-13	A	A	Structural Remarks	A	A



STRUCTURE INSPECTION PROCEDURES



When:

Annually during the summer months

Procedures:

- ❖ Tier 1: Visual inspections
- ❖ Tier 2: In-situ data collection





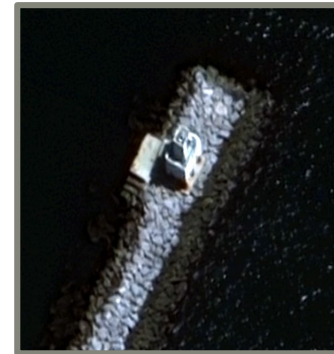
USACE CURRENT R&D EFFORT



- ❖ Remote Inspection of Coastal Structures
- ❖ HQUSACE (Operations) directed; ERDC/CHL technical lead; input/support from Districts
- ❖ Develop comprehensive understanding of District needs/methods; safety
- ❖ Inspection: frequency, techniques, tools, technology, reporting, data storage, imagery, multi-beam bathymetry, side scan sonar, sub-bottom profiling, photogrammetric, LiDAR, ROV, UAV, IR, satellite
- ❖ Make recommendations for standardized methodology
- ❖ \$150K; 2 years (complete Sep 2021)



WorldView-3 Satellite



WorldView-3 Satellite Image, LALB Harbor Middle Breakwater, April 15, 2020, 14.5 inch resolution



NIR False Color Composite



USACE FUTURE NEEDS



- ❖ Climate Change – Sea Level Rise Impacts
- ❖ Comprehensive Evaluation of Projects with Respect to Sea Level Change (CESL)(2016)
- ❖ O&M Authority is limited
- ❖ Need modern O&M Authority to comprehensively address how to respond to sea level rise

CECW-OD Regulation No. 1130-2-520	Department of the Army U.S. Army Corps of Engineers Washington, DC 20314-1000	ER 1130-2-520 29 Nov 96
	Project Operations NAVIGATION AND DREDGING OPERATIONS AND MAINTENANCE POLICIES	
	Distribution Restriction Statement Approved for public release; distribution is unlimited.	



CURRENT LOS ANGELES DISTRICT CONTRACTS



- ❖ Port of Long Beach and Port of Los Angeles, \$27.5M; complete Sep 2020
- ❖ Mission Bay Jetty Repair; \$6.4M; complete Dec 2020
- ❖ Newport Bay Harbor Jetty Repair; \$1.3M (est), Award Dec 2020; complete TBD 2021
- ❖ Channel Islands Harbor Breakwater/Jetty Repair; \$7.5M; Award 1st Qtr 2020; initiate Apr 2021; complete Aug 2021
- ❖ Port San Luis Breakwater Repair; E&D, \$10M (est), Award 2021; complete late 2021

