



**Exploring waterfront infrastructure and
siting on the Central Coast
May 2023**

www.slocounty.ca.gov

Exploring waterfront infrastructure and siting on the Central Coast

- Context on the Central Coast region and economy
- Early work on exploring the opportunities from OSW development
- Overview of the *Central Coast Emerging Industries and Waterfront Siting Infrastructure Study*
- Next steps for the Central Coast



Snapshot of the Central Coast

Demographics

- Slowing population growth
- Disproportionate share of 65+
- Lower than average labor force participation rate
- More highly educated population
- Low unemployment

Major sectors

- Health services
- Agriculture
- Real estate, construction, development, commercial services
- Education
- Government

Target industries

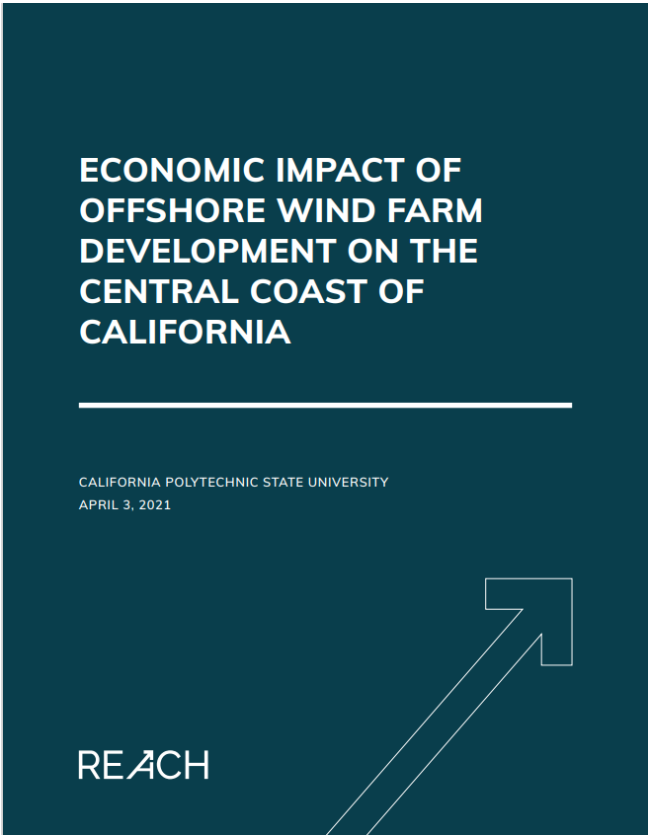
- Agtech
- Cleantech and renewable energy
- Aerospace, defense, precision manufacturing
- Technology

Major challenges

- Infrastructure
- Housing supply and affordability
- Mismatch between wages and high cost of living
- Major transitions – Diablo Canyon, OSW emergence



Early work on opportunities from OSW development



DECEMBER 7, 2022

COMMUNITY COMMITMENT TO COLLABORATE TO ADVANCE OFFSHORE WIND ON THE CENTRAL COAST OF CALIFORNIA



Dear Provisional Winners of the Morro Bay Offshore Wind Energy Auction:

As a coalition of Central Coast leaders and organizations, we write to congratulate you on the auction of the Morro Bay Wind Energy Area and express our commitment to collaborating to advance the responsible development of offshore wind and close partnership with the Central Coast community.

The Central Coast is uniquely positioned to help pioneer offshore wind on the West Coast and advance state and federal climate goals, building on its long-standing role as an energy powerhouse and environmental leader. With existing transmission capacity and an array of waterfront infrastructure options, a skilled workforce and world-class regional universities and training providers, we are eager to collaborate to support these important efforts for our energy, climate and economic future. We appreciate that the final sale notice highlights the importance of community engagement and includes bidding credits related to workforce development, supply chains, and local communities, and we welcome collaboration to build a strong partnership with the Central Coast's residents, workforce and businesses.



REACH Central Coast Waterfront Infrastructure Study



Exploring potential infrastructure

REACH has launched a study examining opportunities to support offshore wind development and create new jobs by enhancing or adding to the region's waterfront infrastructure.

Regional Partnership to Explore Central Coast Waterfront Infrastructure Opportunities

Funding and Project Oversight:



Project Administration:



Technical Consulting Lead:



Governance and Outreach

Technical Steering + Elected Review Committees



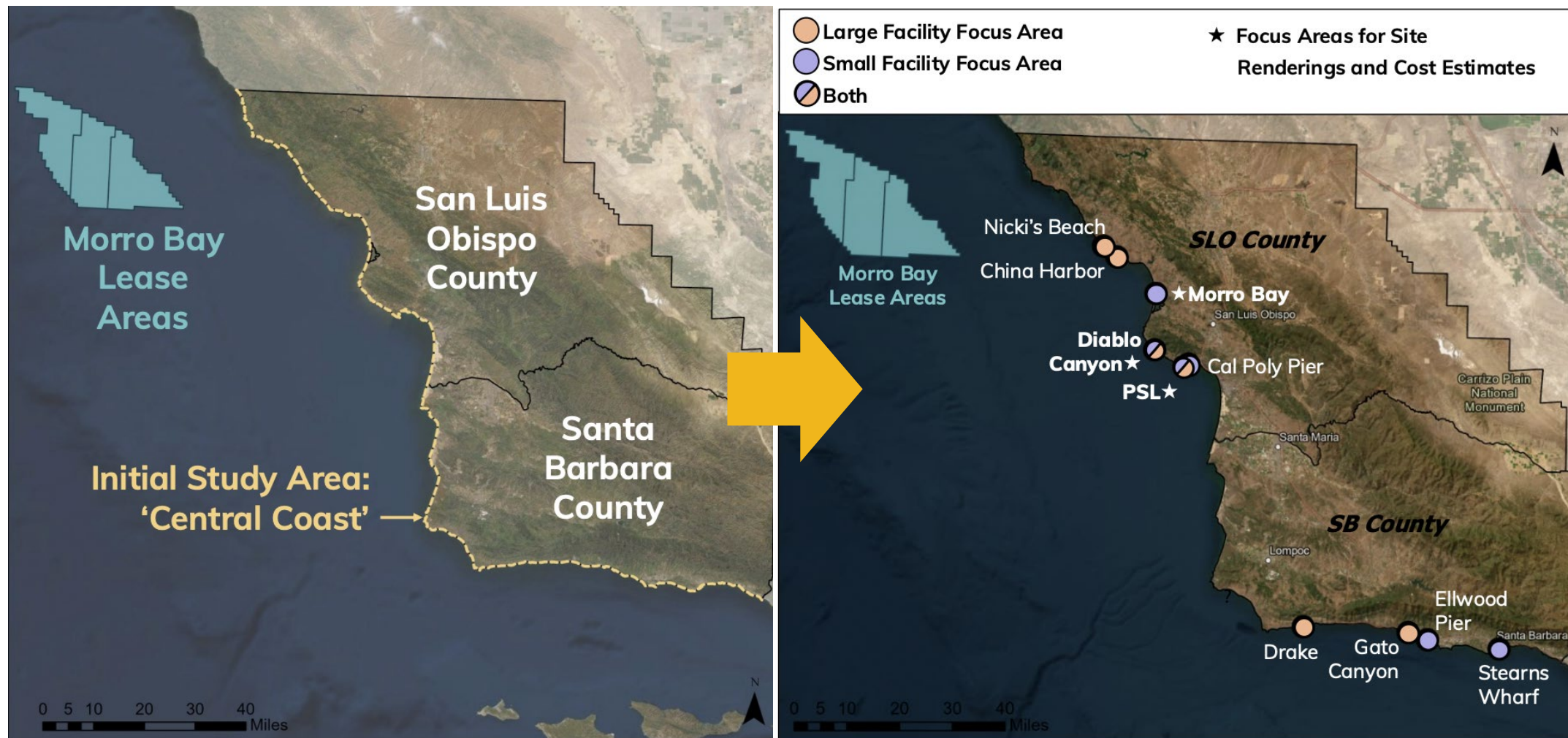
Stakeholder Outreach + Briefings

- + Infrastructure owners/operators
- + Local government and community stakeholders
- + State/Federal agencies

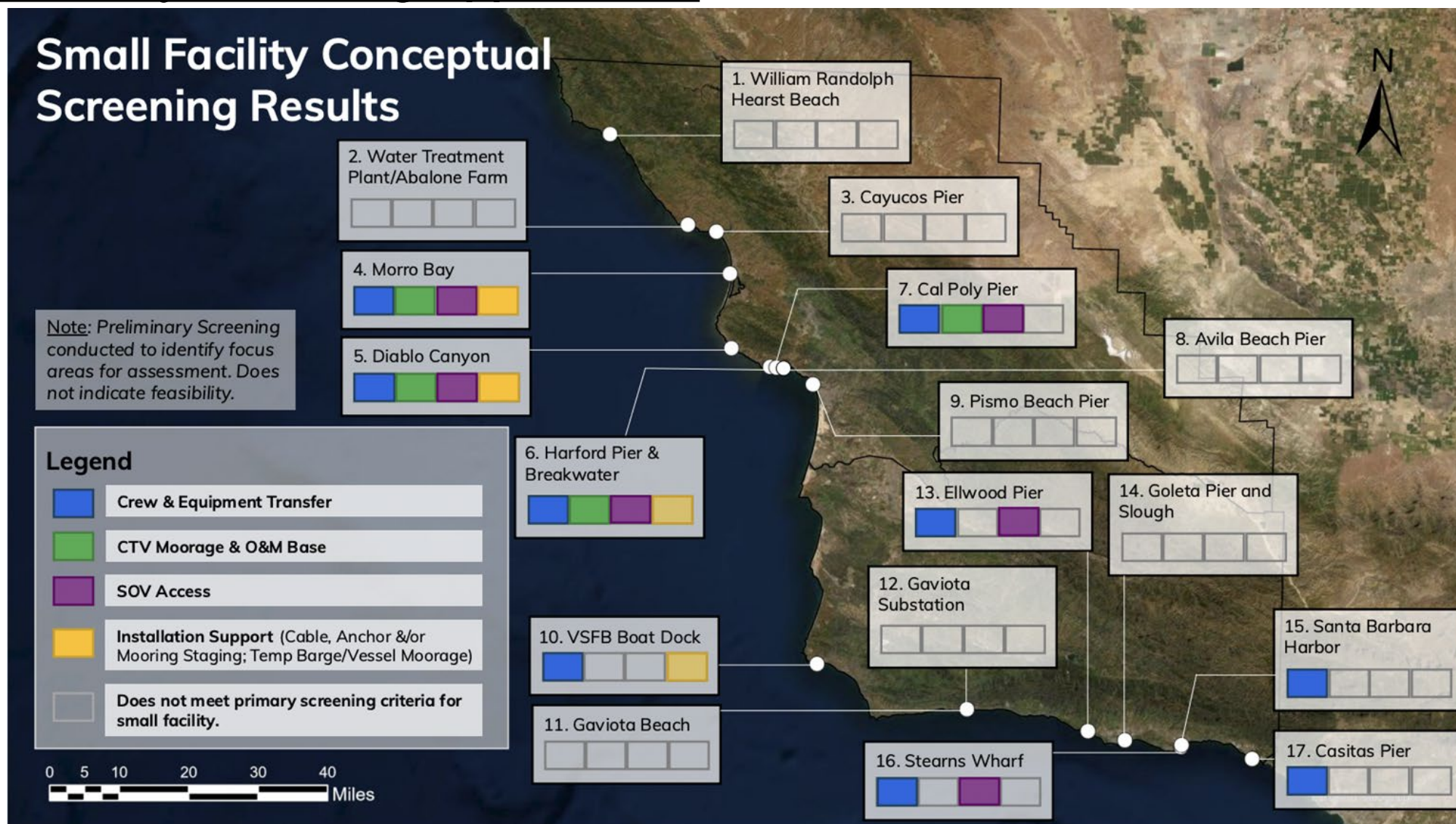
Project Outcomes

- Technical “menu of options” for port infrastructure on the Central Coast
- Exercise in deeper community engagement to prepare for OSW

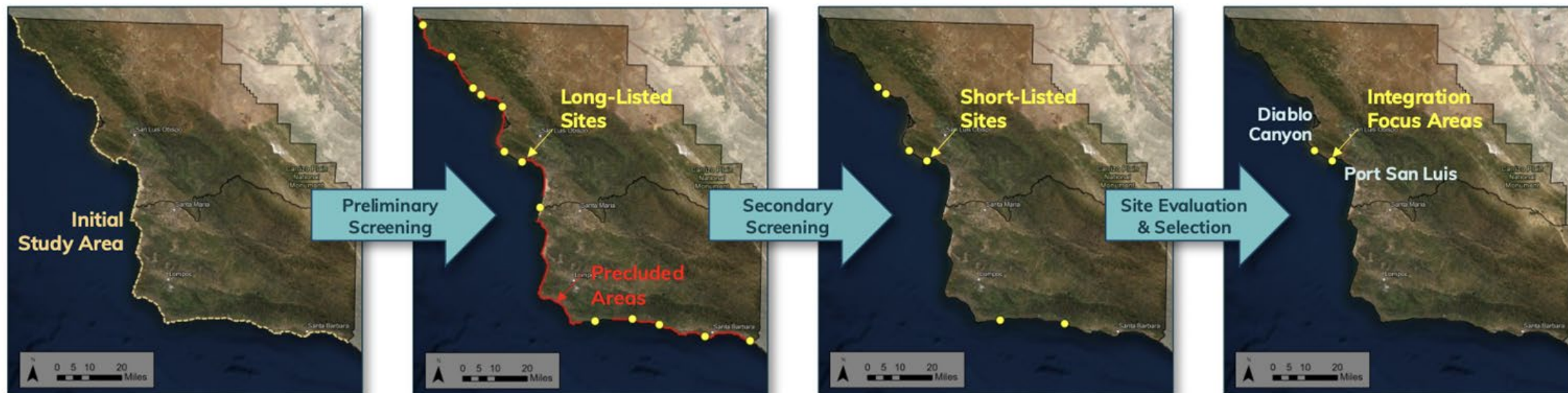
High Level Summary



Small Facility Screening Approach



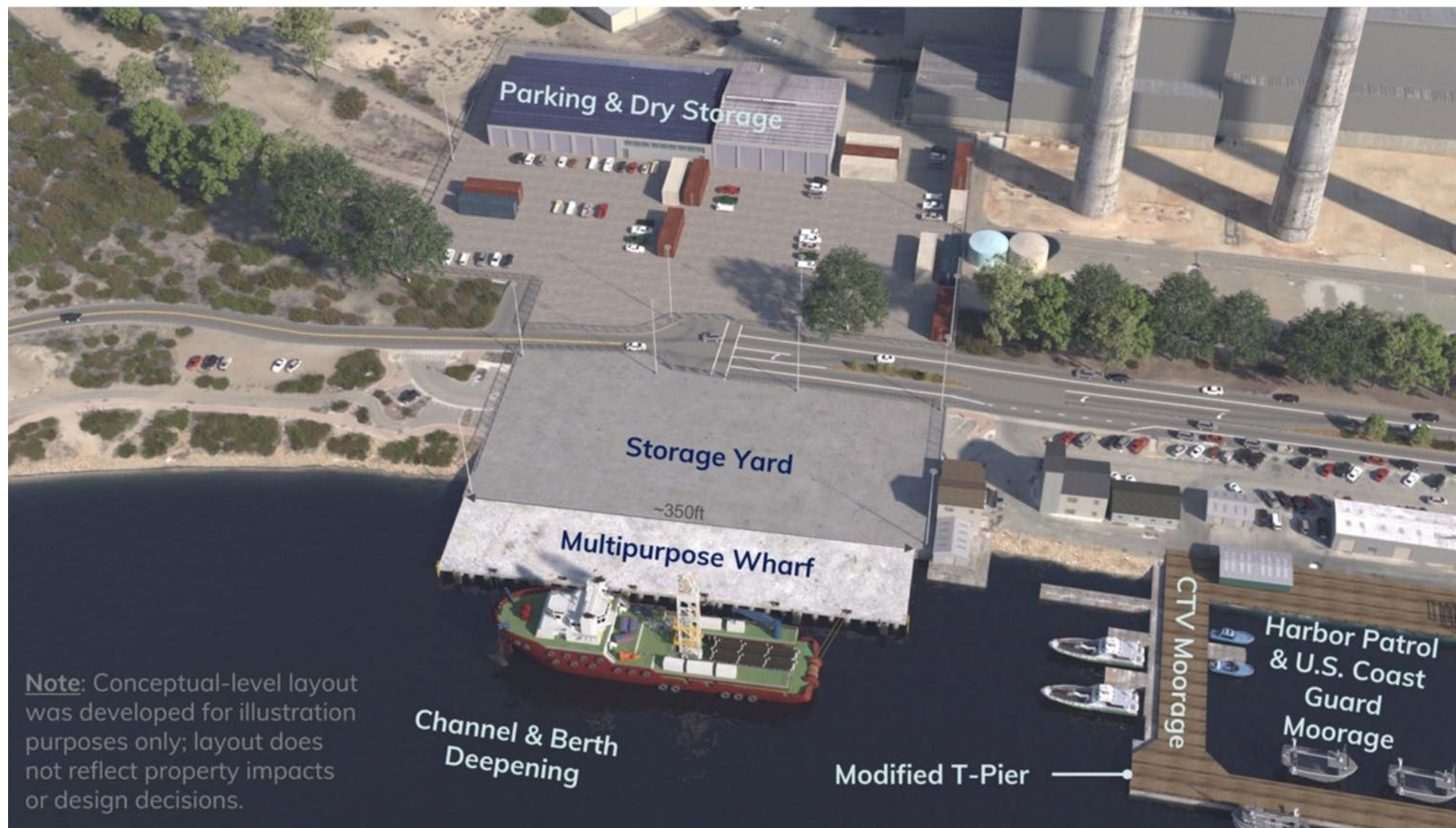
Large Facility Screening Approach



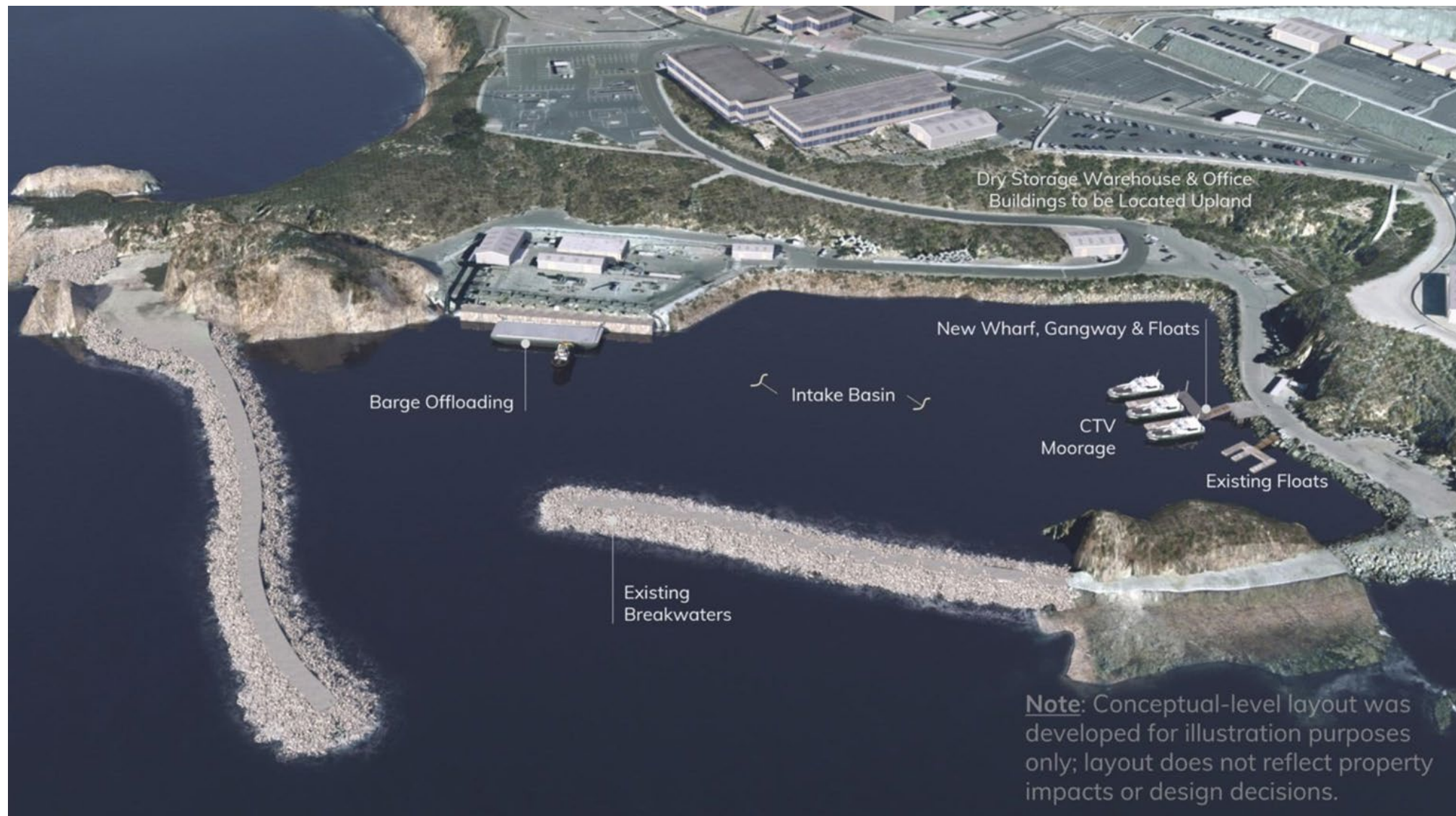
San Luis Obispo County Overview



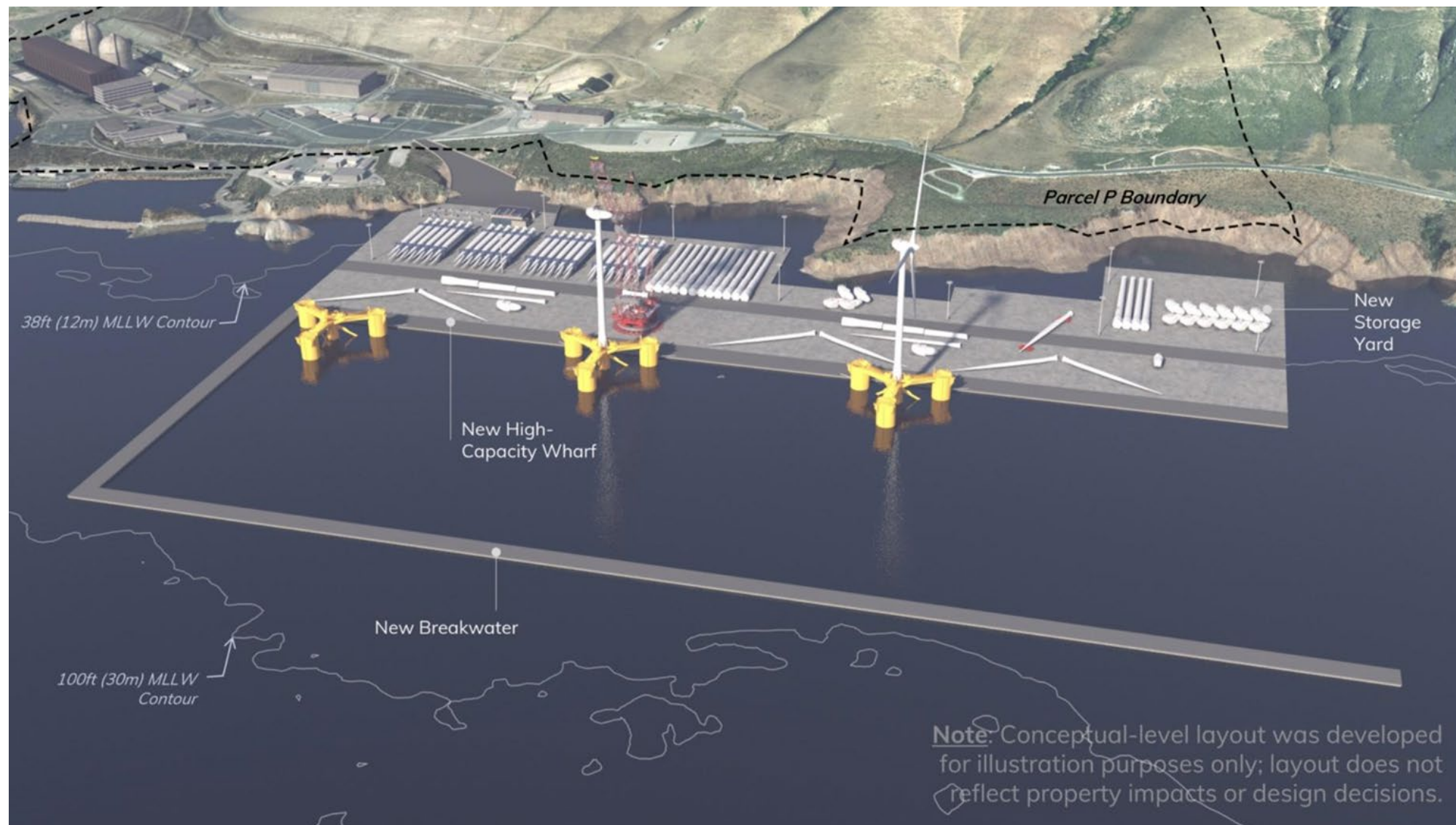
Focus Area - Morro Bay



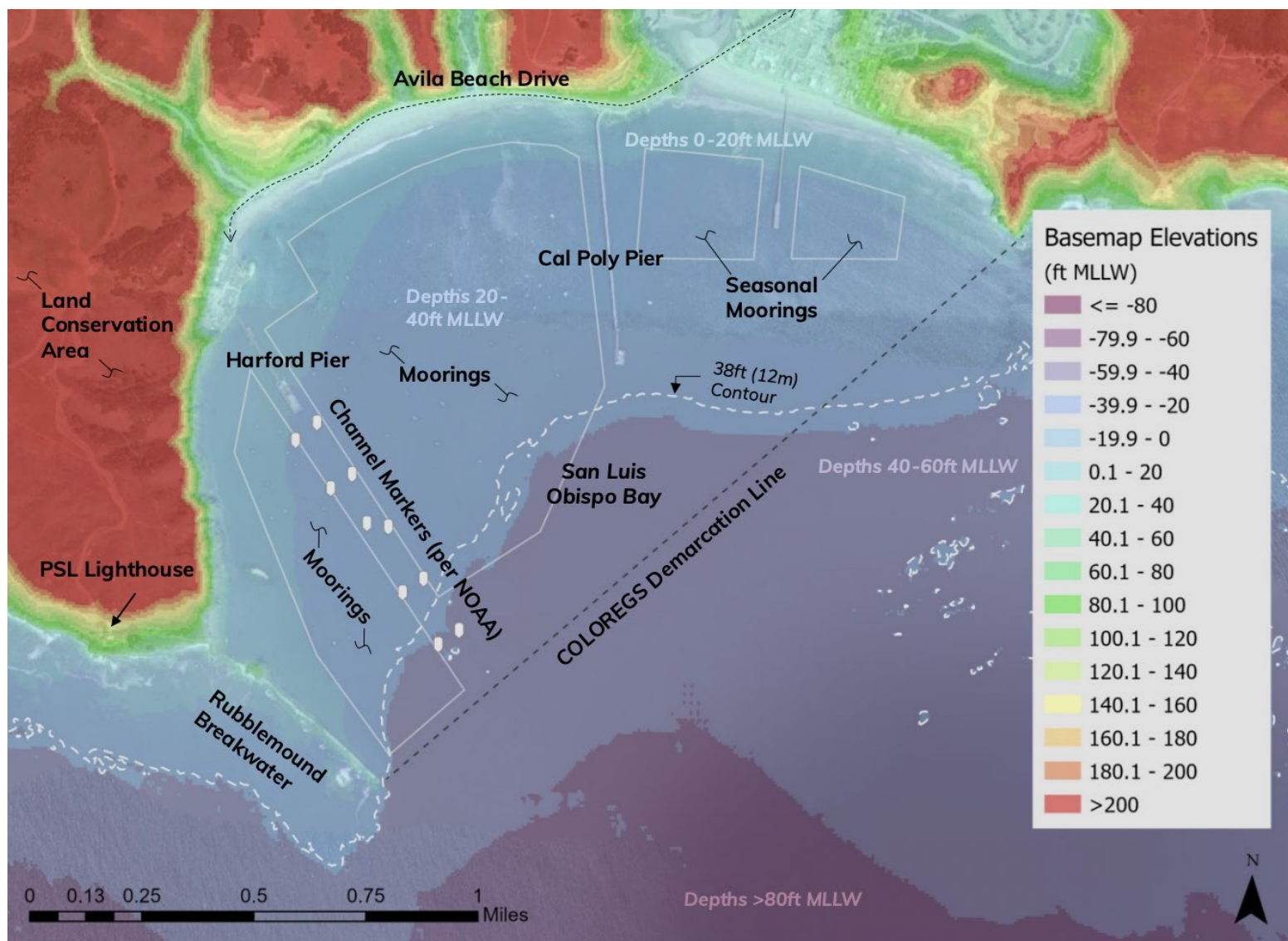
Focus Area - Diablo Canyon



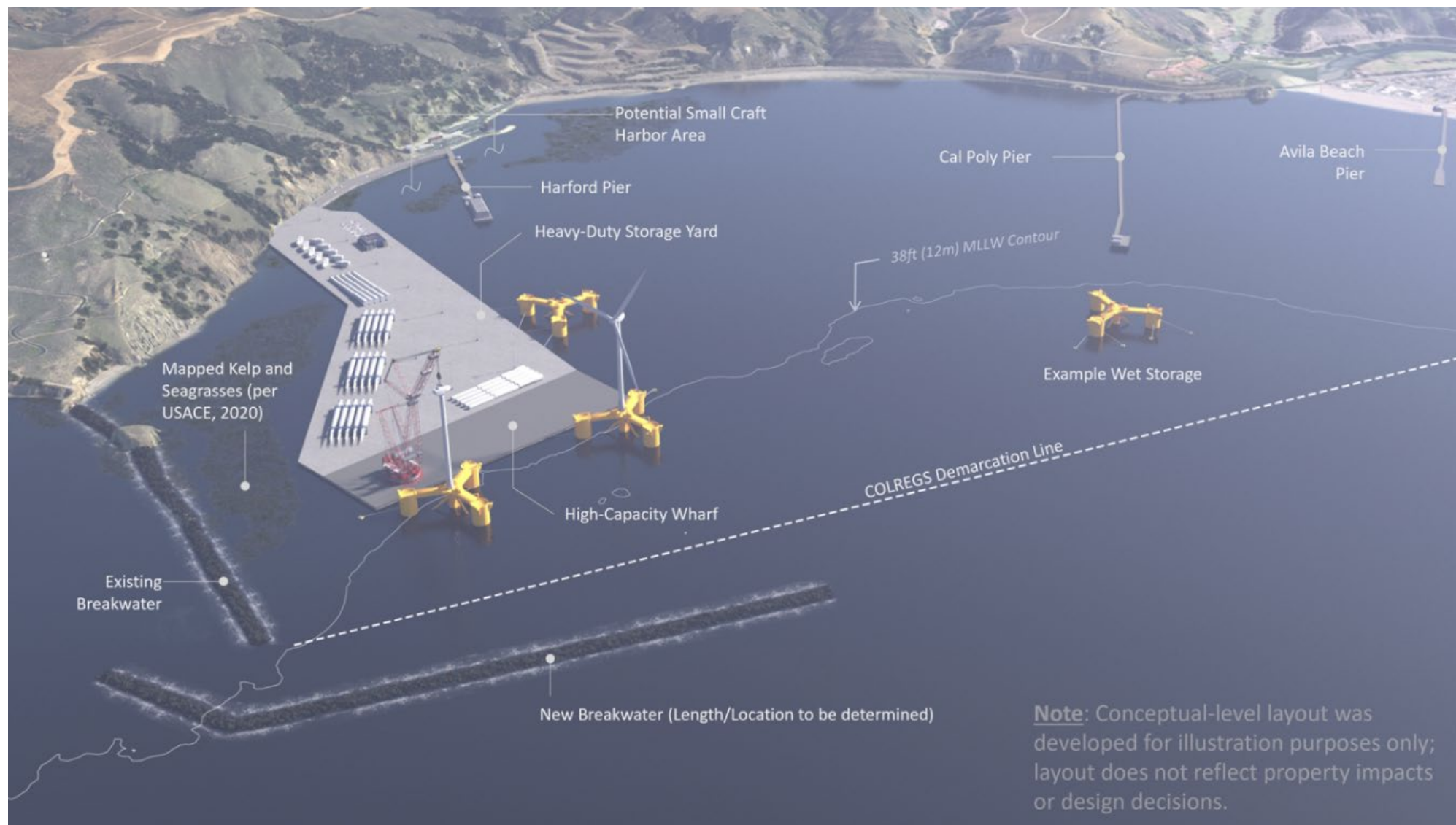
Focus Area - Diablo Canyon



Focus Area - Port San Luis/Cal Poly Pier



Focus Area - Port San Luis/Cal Poly Pier



What's next?

- Defining scope for \$1 million to advance next phase of port planning
- Continuing to work with infrastructure owners/operators and developers to understand options and strategies
- Community engagement and consensus building

